

History and Objectives

The Mount Scopus College Foundation was established in 1987 to support the Board of Governors and to be the body responsible for major fundraising for the College. Funds raised can be applied to buildings and refurbishment, grounds, tuition fee subsidies, undertaking debt reduction and funding educational programs.

Members of the Foundation include corporations, individuals and families who each have donated a minimum of \$20,000 over a maximum of 5 years since 1987. Classifications of membership are dependent on gift level. They are Members, Fellows, Benefactors, Founders, Trustees and Life Trustees.

The Chairman of the Foundation, since inception, is Solomon Lew.

The current President, Henry Lanzer, was appointed in 1996.

Former Presidents include David Smorgon and Dug Pomeroy.

The goals of the Foundation are pursued by an Executive Committee supported by an Executive Officer - currently Marilyn Simon.

Background Summary 1988 - 1996

Works completed included the construction of another floor of science and art facilities onto the Basser Wing, with the assistance of the Alter, Hansky and Lubansky families. Five state of the art modular classrooms were purchased for the Smorgon Family Primary School.

Between 1990 and 1995, \$3,769,000 was distributed to the College for subsidised tuition fees.

As a result of the Gandel Family gift of \$1,500,000, major refurbishment and development was completed. It included the total upgrading of classrooms, rest rooms, and lockers; modernisation of science laboratories; expanding and upgrading computer facilities, computerisation of the libraries and

improvements to the Rose Hall. In appreciation the Campus at Burwood was dedicated as the Gandel Campus.

In 1995 an extension to the Rose Hall created the Susie and Eric Stock Drama Studio and extended Sport and Physical Education facilities.

1996

The exterior of the buildings at the Gandel Campus were rendered and painted and the grounds at Gandel Besen House were enhanced.

A Masterplan for the future of the College was determined by the College leadership, staff and parents. It incorporated the structural improvements vital for the School's development and growth in the diverse areas of Performing and Visual Arts, Sport, Jewish Studies, Humanities, and Science and Technology.

1997

The Foundation launched its '5 year - \$8,000,000' Capital Campaign to raise the funds for the Capital Works Projects - as determined by the Masterplan. The projects comprised a complete upgrading of all sporting facilities, the building of a 1000 seat Performing Arts Centre, the expanding and improving of bus and car parking and play areas and the creating of a new entrance to the College. The development of the Elizabeth and Nicholas Slezak Multi Media and Resource Centre was also included.

The Baker Family Cafeteria was completed at the Gandel Campus incorporating a new kitchen, and attractive indoor and outdoor eating areas.

The George and Gita Smorgon Sports Complex was completed. The Complex incorporates the Rita and Sam Kras Basketball Centre, Kras Payes Weinman Recreation Centre, Jenny and Noel Levin Sports Pavilion, Lustig and Moar Aquatic Centre, Margie and Michael Small Tennis Centre and the Jack Skolnik Oval.

1998

The final plans for the Besen Family Performing Arts Centre, incorporating the Baron and Tashi Foyer and Plaza, the Alter Family Auditorium, and Yvonne and Leon Fink Amphitheatre were determined. The Centre will serve to enhance the Eva and Marc Besen School of Music and the Susie and Eric Stock School of Drama.

In response to enrolment demand and demographic changes, plans were created for the development and expansion of the Fink Karp Ivany Campus.

1999

The lengthy and involved process of securing property, council permission and the finalising of the Fink Karp Ivany Campus plans is almost complete and construction about to commence.

Construction of the Besen Family Performing Arts Centre and surrounding area begins and develops at a rapid rate.

Mount Scopus College Foundation 1999 Executive

Chairman
Solomon Lew

President
Henry Lanzer

Vice President (Fundraising)
Roy Tashi

Vice President (Bequests and Endowments)
Jack Hansky

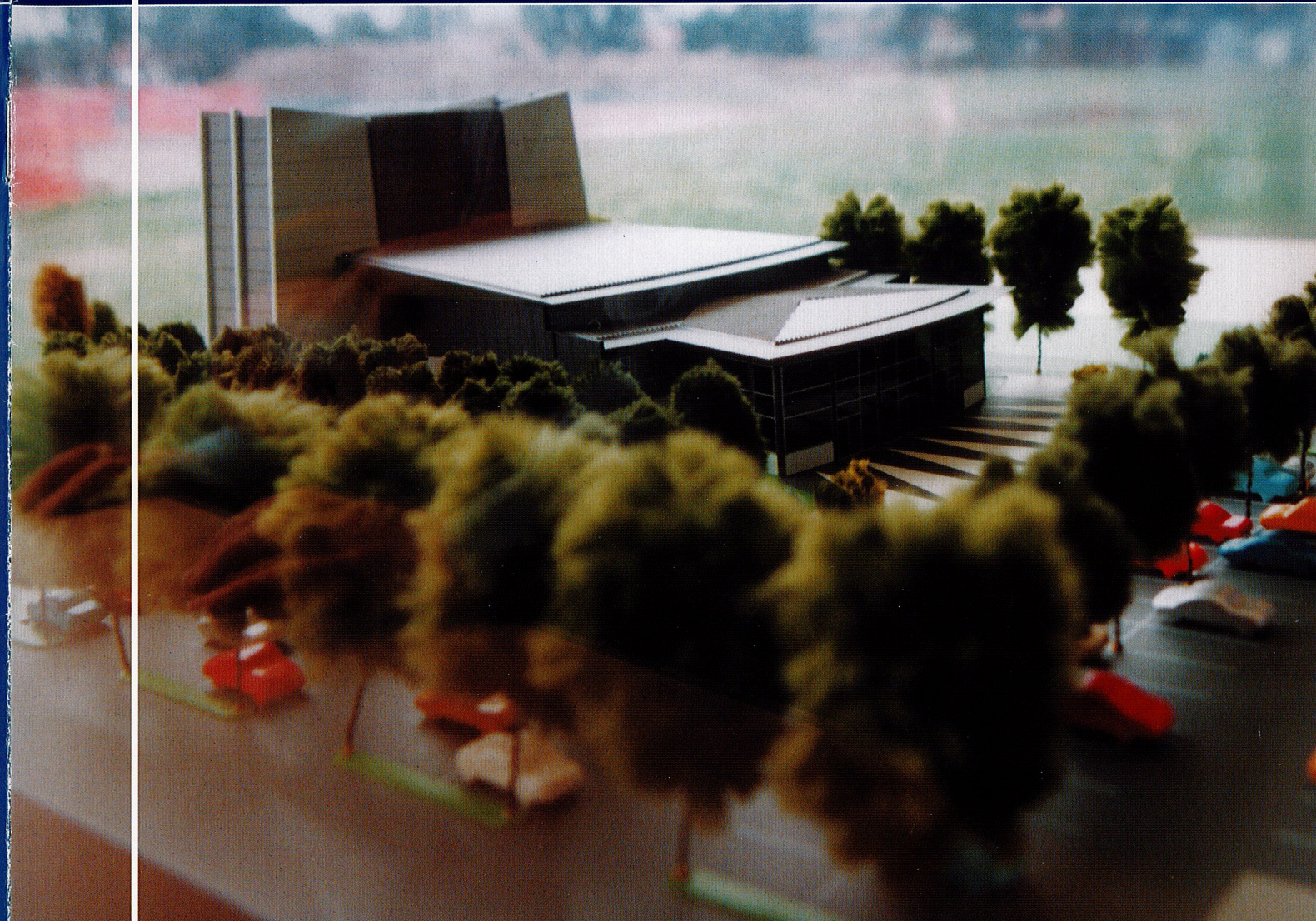
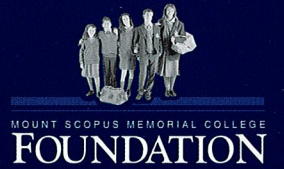
Additional Committee
Joey Borensztajn
Michael Karp
Earle Sacher
Nathan Shafir
Roslyn Smorgon

College President
Johnny Baker

Principal
Hilton Rubin

Executive Officer
Marilyn Simon

Mount Scopus Memorial College Foundation



1999 Annual Report

The Strength and Courage to Build our Foundation for the Future



If you would like to discuss making a gift, endowment or bequest to Mount Scopus College, please call Marilyn Simon, Director of Fundraising, on 9888 9044 or e-mail msimon@scopus.vic.edu.au

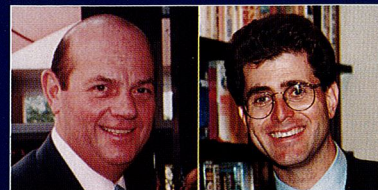
Mount Scopus Memorial College Foundation Gandel Campus 245 Burwood Highway Burwood Australia 3125
Telephone (03) 9888 9044 Facsimile (03) 9888 7771 Web Site Address www.scopus.vic.edu.au ACN 007 008 862



From the Chairman and the President

Mount Scopus Memorial College Foundation 1999 Annual Report

We are delighted to update you on the activities and programs of the Mount Scopus College Foundation for the past year.

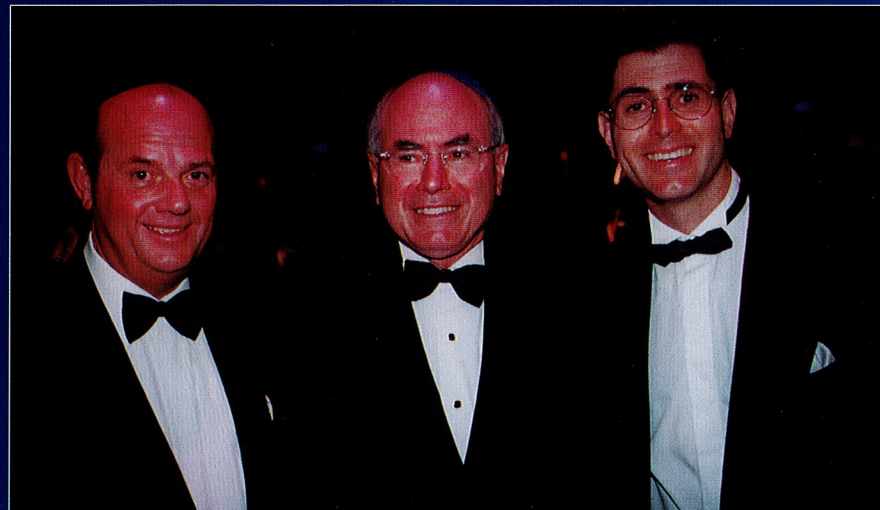


Solomon Lew

Henry Lanzer

Current Campaign total pledges: \$9,012,000

The Foundation Executive has continued to pursue its extended goal in response to College initiatives and increased building costs. The 1998 Annual Report announced total pledges of \$7,581,000 which had increased to \$8,000,000 – our original target – by the time of the Annual General Meeting in November. We now stand at \$9,012,000 (as at the time of writing) – an additional \$1,431,000 having been pledged over the corresponding twelve months. This is an especially gratifying result for the tail end of our Campaign – and we do not intend to stop here. Of this amount, \$4,471,000 has been collected. Our thanks again go to you, our generous supporters, who have given Mount Scopus College the ability to pursue its vision.



At the Gala Dinner Solomon Lew with Prime Minister John Howard and Henry Lanzer



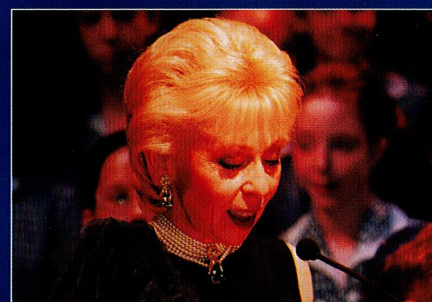
Jubilee Patron John Gandel AO and the Hon. Phil Honeywood at the opening of 'Jubilation'

1999 – the College's milestone **Jubilee** year – has been one of celebration for everyone. We thank John Gandel AO, Patron, Roslyn Smorgon and Helen Synman, Convenors, and their entire committee, for their contribution to the year's expansive Jubilee program. Recognising fifty years of excellent Jewish and secular education has made us all realise, more than ever, the central role of Mount Scopus College for the entire Melbourne Jewish Community. Over that time the College has maintained its original charter to subsidise tuition fees assisting as many children as possible receive their Jewish education. It continues to do so at a cost of over \$2,000,000 each year, regardless of its fundraising success.

In January, Mount Scopus College was delighted to make the George and Gita Smorgon Sports Complex available to Maccabi for its Junior Carnival. In addition to all our students, hundreds of children from around Australia have now benefited from your support which had provided funds for our first project – the complete upgrading and enlarging of our sporting facilities.

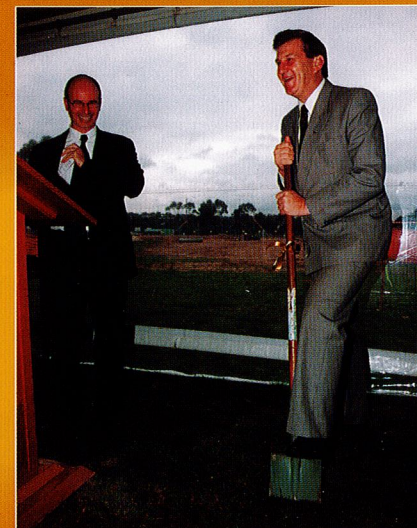
The Foundation began the year marking the Jubilee with its own **Gala Dinner** in March at which we were honoured by the attendance and very moving address of the Prime Minister, the Hon. John Howard. Three hundred and sixty Foundation members and friends enjoyed a marvellous evening of performance and tributes organised so capably and creatively by Event Chairman and hostess, Rosie Lew, on the stage of Her Majesty's Theatre. The theme was "When You Believe", a fitting succession to the "Power of the Dream" that launched our Campaign in 1997. We genuinely thank all others who were involved with this evening and who worked so enthusiastically to ensure its success, notably Joey Borensztajn, College staff and students. Another recipient of the "Leon Fink Award for Commitment to Jewish Education", the Liberman Family, was awarded at the function.

On display at the Gala Dinner was the newly created **Foundation Honour Board** which lists all members and their Foundation membership level. It has now been placed in a prominent position in the Garry Stock Founders Hall at the Gandel Campus.



Rosie Lew

March also saw the **Groundbreaking Ceremony** for the **Besen Family Performing Arts Centre**, the second of our determined projects. The Hon Jeff Kennett, Premier of Victoria, officially 'turned' the soil for this most exciting development. The Besen Family Performing Arts Centre comprises the **Alter Family Auditorium**, the **Baron and Tashi Foyer and Plaza** and the **Yvonne and Leon Fink Amphitheatre**. It will enhance the **Eva and Marc Besen School of Music**, the **Susie and Eric Stock School of Drama** and the **School of Media Studies**.

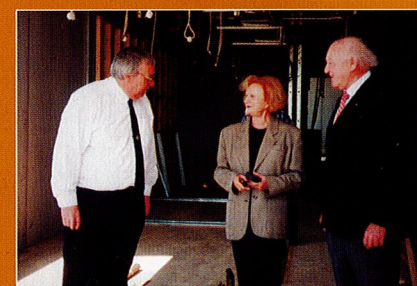


The Hon. Jeff Kennett 'turning' the soil



Marc Besen AO speaks on behalf of the donors at the Groundbreaking Ceremony

We are watching this state of the art building 'grow' dramatically and the entire Community looks forward to its opening at the beginning of next year. Premier Kennett paid tribute to the College and the principal donors for recognising the important role that the performing arts plays in the development of the whole person. The provision of this Centre underscores the College's commitment to the performing arts which will allow for all our students to advance their creative skills, both formally and informally.



Eva and Marc Besen inspecting the Besen Family Performing Arts Centre site

The Centre now employs a Theatre Manager to professionally market what will be also be an outstanding venue for the wider community and to ensure its operational success.

We should also note that this project includes landscaped play areas, upgraded car and bus parking and the new entrance to the College. During the year the College

had the opportunity to purchase a vital Station Street property adjacent to the Bus Park which now allows the full realisation of our plans to make this the main entrance for the entire Gandel Campus.

We take this opportunity to thank Tony Foster and Bruce Joske from the College; Paul Ramler and Phil Weinman and the Finance and Resources Committee, Charles Slucki, Director of Performing Arts, and Alan Synman and his team, who have brought us to this point.

The Future

The school continues to attract many new students and there are 'waiting' lists at many levels. Our kindergartens at Gandel Besen House and Fink Karp Ivany are at capacity which augurs well for the future. The imminent expansion and refurbishment of the Fink Karp Ivany Campus will relieve the pressure at Junior levels, whilst providing an outstanding new facility.

Changes in technology, teaching methods and the need for an improved environment mean that the Foundation must continue its vital work so that the school can accomplish its objectives.

Although we have surpassed the initial goal in terms of our fundraising target for this Campaign – in less than three years – we recognise there is still so much the

College requires. To this end, discussion has already begun between the key educationalists, professional staff and College lay leaders to identify and prioritise new projects that will take us well into the next millennium.

As the body responsible for the major fundraising for the College we must plan strategically so that the College leadership can achieve their vision. We are ever mindful of the school's commitment to provide subsidised tuition fees. At the same time the College should have the resources to develop and provide excellent educational programs. Our children also deserve outstanding facilities. Programs such as Ulpan would ideally be available to every student and this will only eventuate by sponsorship or external funding.

The Foundation Executive's role is also to raise awareness within the Community that the responsibility for Jewish continuity is a shared one – that we all have obligations in regard to providing a Jewish education for all.

Our agenda for next year includes a review of programs to increase fundraising in the areas of

- wills, bequests and endowments
- communal organisations' support
- corporate sponsorship
- Israel funded grants

Bequests

We are indebted to the following people who have so thoughtfully demonstrated their understanding of the importance of Mount Scopus by including the College in their Will.

We acknowledge and honour

Anna Brown
Harriett Gordon
Mendel Herszfeld
Hilda and Izrael Kozlowski
Hirsh Light
Vica and Mitia Yavitch

May their memory be a blessing and live on in our students.

We encourage everyone to consider providing for the students of Mount Scopus in this manner.

Endowments

At the end of last year **Sylvia Gelman, MBE**, endowed a major scholarship in memory of her late husband, Manuel. The interest derived will fund an annual award for the professional development of teaching staff who may apply to attend a relevant conference. This is just another example of the tangible support that Sylvia has provided over many years and we genuinely thank her, and extend congratulations on the celebration of her eightieth birthday.

The **Kew Hebrew Congregation** has established three scholarships this year – two Norman Smorgon Kew Hebrew Congregation T'fillah Scholarships and a Victor Smorgon Kew Hebrew Congregation T'fillah Scholarship. The interest received from the large sum endowed will benefit both students and the College. We thank the Congregation and also extend a hearty Mazal Tov for their Jubilee.

Annual General Meeting

We look forward to welcoming you to the Annual General Meeting and Cocktails at the home of Rosie and Solomon Lew on Monday, 15 November, 1999. (Please reply to invitation enclosed with this Report)

Certificates will be presented to new members (as at time of writing):

Lorraine Bloom and
 David and Michael Casper

Freda and George Castan

Judy and Mark Gandur

Sylvia Gelman

Sylvia and Danny Gluck

Ruth and Gary Hershan

Geoffrey Kempler

Kew Hebrew Congregation

Ziva and Shaya Kramer

Harry Meed

Rita and Bill Rogers

Rhonda and Michael Rothschild

Lynne and Graeme Samuel

We also acknowledge additional pledges during the year by:

Ada and Ron Birch

Helen and Bernard Carp

Yvonne and Ian Davis

Edith and Sol Greiman

Leonie and Morris Joel

Sue and Michael Karp

Irit and Barry Kave with Marilyn and Stephen Wagen

Liberman Family

Dinah and Mark Munzer

Lisa and Dug Pomeroy

Rogers Charitable Foundation

Please join us at the AGM to show your appreciation.

With thanks....

Our progress over the past year has been satisfying. We understand that without the commitment of many people it would not be possible. The Foundation Executive has again appreciated the endorsement and co-operation of Hilton Rubin, Principal, and Johnny Baker, College President in pursuit of its goals. We also acknowledge the commitment of the Board of Governors.

We genuinely thank each and every one of our team - the Foundation Executive - Johnny Baker, Joey Borensztajn, Jack Hansky, Michael Karp, Earle Sacher, Nathan Shafir, Ros Smorgon, Roy Tashi and Marilyn Simon, our Foundation Executive Officer.

We conclude our report by extending our sincere thanks to our donors. We are constantly amazed at your willingness to discuss and extend support for the College. We must all appreciate that our financial support today does not just provide buildings – it is creating the ability for Mount Scopus College to continue its proud tradition. We hope that you derive much pleasure and satisfaction knowing that you are contributing to your children's and grandchildren's Jewish future.

Thank you and Kol Ha Kavod! We look forward to welcoming you at the Annual General Meeting in November and at the Dedication of the Besen Family Performing Arts Centre early in the new year.

S. Lew
Solomon Lew
 Chairman

Henry Lanzer
Henry Lanzer
 President

Honouring Rosie and Solomon Lew

At the Foundation Gala Dinner, Johnny Baker, College President and Henry Lanzer, Foundation President, together with the Prime Minister, surprised Rosie and Sol Lew with a presentation of a special award. The College has proudly established the Rosie and Solomon Lew Scholarship in

recognition and appreciation of the outstanding leadership and contribution of Sol as founding Chairman of the Mount Scopus College Foundation – a role he still holds twelve years later. This Scholarship will be awarded annually to a student in financial need.

We also take this opportunity to thank both Rosie and Sol for so generously hosting, yet again, the Gala Dinner.

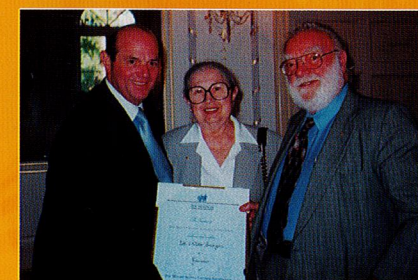
Yasher Koach and thank you!



Leon Fink Memorial Award Recipients

The **Leon Fink Memorial Award for Commitment to Jewish Education** is an award created in 1997 in honour of the late Leon Fink and his longstanding support and dedication to Mount Scopus Memorial College.

This award acknowledges the Mount Scopus College Foundation's major benefactors. We take this opportunity to thank them once again.



Solomon Lew with Loti and Victor Smorgon - recipients of the Leon Fink Memorial Award at the 1998 AGM



Yvonne Fink and Solomon Lew present the Leon Fink Memorial Award to members of the Liberman Family at the Gala Dinner

ANZ
 Lynda and Rodney Adler
 Nathan Baron Family
 Helen and Maurice Alter and Family
 Eva and Marc Besen and Family
 Fink Karp Ivany Family
 Gandel Family
 Stera and Joseph Gutnick
 Paula and Jack Hansky Family
 Rosie and Solomon Lew
 Liberman Family
 Lustig and Moar Family
 Pratt Family
 The Slezak Trusts
 Gita and George Smorgon
 Loti and Victor Smorgon
 Susie and Eric Stock
 Sylvia and Roy Tashi

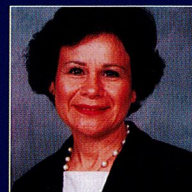
Dennis Prager for Scopus

Mount Scopus College co-hosted the Melbourne visit of Dennis Prager for a most stimulating and inspiring weekend. Dennis, described by New York's Jewish Week as one of the "most interesting minds in American Jewish life" is one of America's most respected radio talk show hosts and commentators and the author of many books.

We were delighted to give over two hundred supporters of the College the opportunity to hear him address the topic "When good homes don't produce good children" who also enjoyed the warm hospitality of Roslyn and David Smorgon.

Eighty members of 'Foundation for the Future', at the official launch of the group, were treated to insights from Dennis' latest book "Happiness is a Serious Problem" at the home of Louise and Russell Casper.

From the Executive Officer

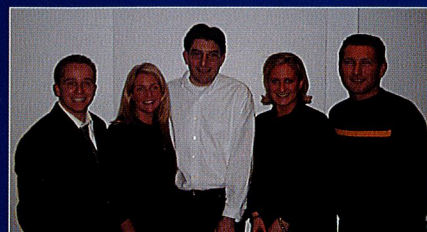


Fifty years..... and so much to celebrate and to appreciate – not least of which is the dedicated commitment and support of all our volunteers and donors, both past and present. The Foundation Executive and Foundation donors are prime examples of the incredibly strong Scopus support network of which I feel privileged to be an integral part.

To raise more than \$9,000,000 in less than three years is no mean feat and it takes great leadership and dedicated volunteers. My heartfelt thanks to Sol Lew, Henry Lanzer and the entire Foundation Executive. My sincere thanks also to you, our generous and loyal donors.

Every year provides new experiences for me in this role. This year I thank Rosie Lew for the pleasure of working with her as she skilfully orchestrated the Foundation Gala Dinner.

I am also delighted this year to have been involved with the establishment of our



Michael Slonim, Lana Sheezel, Russell Casper, Tammy Lincoln, Dean Smorgon of 'Foundation for the Future'

'Foundation for the Future' – our next generation of supporters and leaders. The word 'foundation' is being used in this context in its broadest sense. This group is being capably led by Russell Casper, Lana Sheezel and Michael Slonim. Their committee, including Elle Kutner, Alla Lew, Tammy Lincoln, Dean Smorgon and Louis Weingarten, will now seek ways of including the younger generation in programs for fundraising and to nurture and encourage involvement on many levels. As a result the Scopus support network will grow even stronger.

On behalf of the College, may I also thank Paula Hansky and Rosie Lew for welcoming the Foundation Executive into their homes for our meetings.

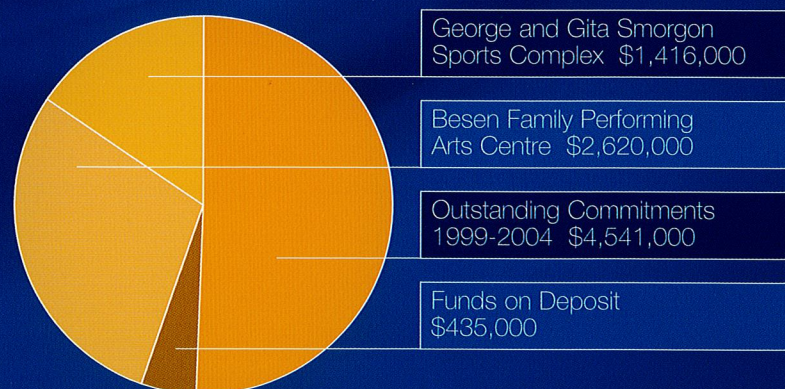
My expanded role as Director of Fundraising for the College has allowed me to become involved with even more of the Scopus Community.

My sincere thanks to everybody with whom I have worked – my Executive, all my Development Office colleagues, College personnel, volunteers and donors – for your valued support and friendship.

Marilyn Simon
Marilyn Simon
Executive Officer

Foundation Financial Summary

As at 30 September 1999



Pledged to this Campaign	\$9,012,000
Collected	\$4,471,000

Distributions

George and Gita Smorgon Sports Complex	\$1,416,000
--	-------------

Besen Family Performing Arts Centre, new entry, bus and car park, play areas	\$2,620,000
--	-------------

Balance on hand	
Funds on deposit	\$435,000

Outstanding commitments	
1999 - 2004	\$4,541,000

Pre current campaign	
	\$445,000

Members

Mount Scopus Memorial College Foundation 1999 Annual Report

Mount Scopus Memorial College gratefully acknowledges and sincerely thanks all the members of the Mount Scopus College Foundation.

LIFE TRUSTEES

BARON and TASHI FAMILIES
BESEN FAMILY
GANDEL FAMILY
STERA and JOSEPH GUTNICK

TRUSTEES

ANZ BANK
ADLER FAMILY
HELEN and MAURICE ALTER
ROSIE and SOLOMON LEW
LUSTIG and MOAR FAMILY
PRATT FAMILY
GEORGE and GITA SMORGON
SMORGON FAMILY

FOUNDERS

ANONYMOUS
FINK KARP MANY FAMILY
PAULA and JACK HANSKY
LIBERMAN FAMILY
LOTI and VICTOR SMORGON
SUSIE and ERIC STOCK

BENEFACTORS

ANONYMOUS
BAKER FAMILY
GERDA and JOSEPH BRENDER
COLES MYER LIMITED
YVONNE FINK
EDWARD GELBARD
ZITA and JOE GERSH
LEONIE and MORRIS JOEL
SUZANNE and MICHAEL KARP
KAVE and WAGEN FAMILY
KRAS PAYES WEINMAN FAMILIES
JANETTE and HENRY LANZER
JENNY and NOEL LEVIN
LUBANSKY FAMILY
LISA and LEVI MOCHKIN
DINAH and MARK MUNZER
LISA and DUG POMEROY
GREG ROSSHANDLER
MARGARET and ANDREW SCHWARTZ
SHAFIR FAMILY
MARGIE and MICHAEL SMALL
WERDIGER FAMILY

FELLOWS

ANONYMOUS
BACHRACH FAMILY
EUGENIE BLASHKI
BLOOM CHARITABLE TRUST
JULIE and JOEY BORENSZTAJN
ROCHELLE and ANTHONY DAVIS

KAYE and BARRY FINK
KEW HEBREW CONGREGATION
THE LEO AND MINA FINK FUND
FRAID and FRIED FAMILY
LINDA and DAVID GOLDBERG
GOLDIN CHAITMAN FAMILY
SOLLY AND JUDY JOSS
CHARITABLE TRUST
DAVID KOBRITZ and FAMILY
EDDIE KORNHAUSER
ZIVA and SHAYA KRAMER
SAM and RITA KRAS
NAOMI and ISI LEIBLER
ROGERS CHARITABLE FOUNDATION
RITA and WILLIAM ROGERS
MILA and MORDIE SLONIM
LEONIE and PETER SZABO

MEMBERS

ANONYMOUS
BENKEL HOPPE FAMILY
BIRCH FAMILY
ELAINE BLOCH-JAFFE
LORRAINE BLOOM and DAVID and MICHAEL CASPER
REBECCA and MICHAEL BURD
PAM and JOE BURSZTYN
HELEN and BERNARD CARP
MARLEN and LEON CARP
FREDA and GEORGE CASTAN
CAULFIELD HEBREW CONGREGATION
CHRAPOT LEWIS FAMILY
GODFREY A COHEN
CHARITABLE TRUST
HELEN and GODFREY CULLEN
YVONNE and IAN DAVIS
SUSIE and EPHRAIM EHRMANN
YVONNE and IAN FAYMAN
BARBARA and MARVIN FAYMAN
RAIE and JOSEPH FEIGLIN
FINER FORK SERVICES
MIRIAM and TOM FOULKES
JENNY and JOHN FOX
ESTHER and DAVID FRENKIEL
MIRIAM and JOE FRIEDMANN
GADDIE METZ and KAHN
JUDY and MARK GANDUR
SYLVIA GELMAN MBE
SYLVIA and DANNY GLUCK
SARA GOLD
RACHEL and ALAN GOLDBERG
GOLDSCHLAGER FAMILY
SHARONA and ALEXANDER GOODMAN
LOUISE GREEN
VIVienne and PHIL GREEN
EDITH and SOL GREIMAN

JUDY and JACK GUTMAN
JOANNE and MARK HANSKY
SUSAN and BRUCE HARRISON
CHYRISSIE and ERIC HEINE
HEINE FAMILY
RUTH and GARY HERSHAN
SUSIE and PAUL IVANY
JANOVIC KLEID FAMILY
AVRIL and PHILLIP JONES
FAY AND BRUCE JOSKE
RODNEY KAGAN
GEOFFREY KEMPLER
KLIGER WOOD REAL ESTATE PTY LTD
KNIGHT FRANK HOOKER
JUDI and MELVYN KORMAN
L M KRONGOLD CHARITABLE TRUST
CLARA and JACK LANZER
MICHELE and GRAHAM LASKY
MIRIAM and MICHAEL LASKY
ROSANNA and MARK LEIBLER
ESTELLE and BARRY LEVY
MAJTUS FAMILY
ELAINE and DAVID MARRINER
HARRY MEED
MELBOURNE HEBREW CONGREGATION
RUTH and BENNY MILDER
HARRY MROCKI
JILL and KEITH NATHAN
SANDRA and IAN RAIZON
TRISH and PAUL RAMLER
ALEXANDER ROBERTSON & CO
IRVIN P ROCKMAN CBE
PAULINE and LIONEL ROSENBERG
GITA and MICHAEL ROTH
ROTH FAMILY
RHONDA and MICHAEL ROTHSCHILD
SHIRLEY and LOUIS RUTMAN
CHERYL and EARLE SACHER
LYNNE and GRAEME SAMUEL
LOUSJE and STEVEN SKALA
SLONIM FAMILIES
ROSLYN and DAVID SMORGON
HENRY SPUT
GARRY STOCK
SHIRLEY and THEO SWEET
HELEN and ALAN SYNMAN
SYNMAN JUSTIN BIALEK
TALBOT BIRNER MORLEY
TOVA TAUBER
SHARON and PETER UNGER
CAROLINE and ALAN WEIN
TAMI and BRADLEY WEIN
LOUIS WEINGARTEN
YVETTE and MORRY WROBY